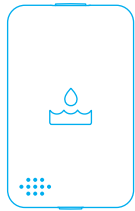


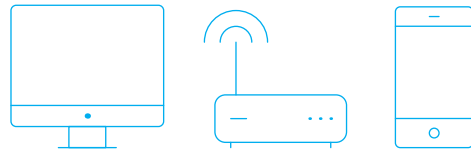
In the box



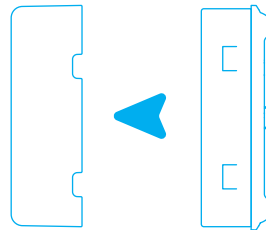
Water Sensor

1x CR-2 Battery
(pre-installed)

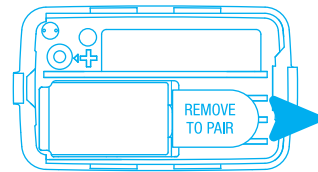
1 Open hub to initiate pairing with device.



2 Remove front cover from device.



3 Then pull the "Remove to Pair" tab to begin the pairing process



Some hubs and controllers require additional steps such as naming the device.

4 LED Patterns



Searching for networks



Joining Successful



Low Battery

5 Installation

The Water Sensor should start the joining process automatically. While the sensor is searching for a network, the status LED will periodically blink blue. Finish pairing setup from your home gateway/hub.



Place the sensor on any surface near pipes fixtures or appliances where leaks may occur.

Factory Reset

Remove cover from sensor and remove battery. While holding down the reset button, reinsert battery to factory reset the device. Repeat the steps to rejoin the ZigBee network.

Support

Web: www.centralite.com
Phone: +1-877-466-5483

Hi!
I'm a Water Sensor.

Let's get started.

