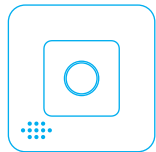


In the box



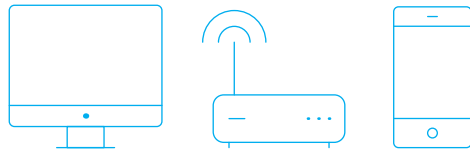
Motion Sensor



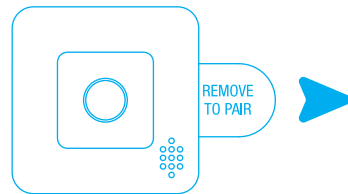
Adhesive Strips

1x CR-2450 Battery
(pre-installed)

1 Open hub to initiate pairing with device.



2 Remove "Remove to Pair" tab to begin the pairing process.



Some hubs and controllers require additional steps such as naming the device.

3 LED Patterns.



Searching for
networks



Joining
Successful



Power
Outage/Low
Battery



White
Emergency
Lighting

4 Installation

Installing on Wall

Ensure wall mounting surface is clear of dirt or dust.

Attach both adhesive strips to the back of the sensor and press firmly onto wall surface (see figure 1).

Installing in Corner

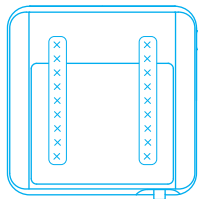
Ensure wall mounting surface is clear of dirt or dust.

Attach both adhesive strips to the back corners of the sensor and press firmly into corner (see figure 2).

3328-C-M-v1.0

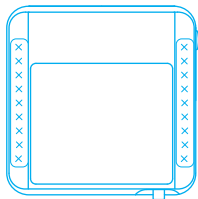
5 Figures

Figure 1



Wall Mount Position

Figure 2



Corner Mount Position

For best results, mount sensor approximately 7 to 8 feet above ground level.

Factory Reset

Slide out battery tray. Press and hold reset button on the bottom of the side of the sensor. While holding down the reset button, slide the battery tray back into the device to factory reset. Repeat the steps to rejoin the ZigBee network.

Support

Web: www.centralite.com

Phone: +1-877-466-5483

Hi!
I'm a Motion Sensor.

Let's get started.

